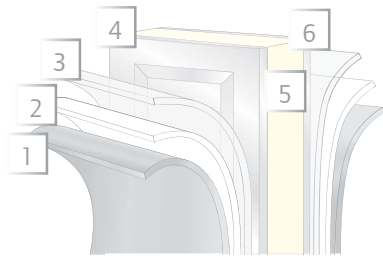


## RockCreeke™

Designed to provide unsurpassed character in a maintenance-free design, Raynor RockCreeke overlay doors feature an environmentally stable trim board material.



1. baked-on finish
2. epoxy primer
3. galvanized layer
4. high-strength steel
5. polyurethane insulation
6. high-strength steel



RockCreeke, Swing-Out, White over Barn Red with 3 over 3 clear glass

### Colors

#### Standard Base Colors



#### Optional Board Color



#### Standard Board Color



#### Optional

Raynor's OptiFinish paint process allows your RockCreeke door to be customized with more than 1,800 Sherwin-Williams® colors. Mix and match to achieve your perfect 2-tone door.



### Panel Options

#### Swing-Out



#### Bi-Fold



#### Accordion



\*Many other custom options available. Contact your Raynor dealer for further details.

### Window Options\*

#### 1 pane



#### 1 pane arched



#### 3 pane\*\*\*



#### 3 over 3 pane\*\*



#### 3 over 3 pane arched\*\*



\* Available in clear, water, and insulated glass

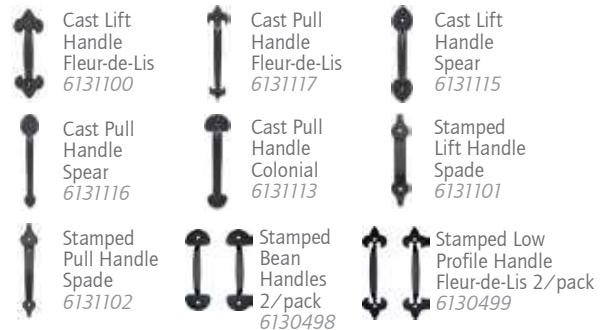
\*\* Available in 4 over 4 pattern

\*\*\* Available in 4 pane pattern

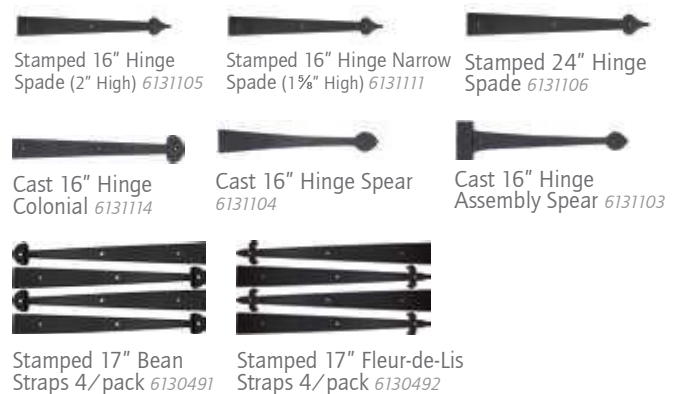
### Optional Decorative Hardware

Raynor's many decorative hardware options add the finishing touches to your RockCreeke™ Door.

#### Handles



#### Straps



#### Track Options

Galvanized (standard)



EnduraCote™ (optional)

